

Listing Features

19974 SILVERVIEW ROAD, HOPE



Rob Warwick
Personal Real Estate Corporation
604-720-2256
rob@sellingwithrob.com

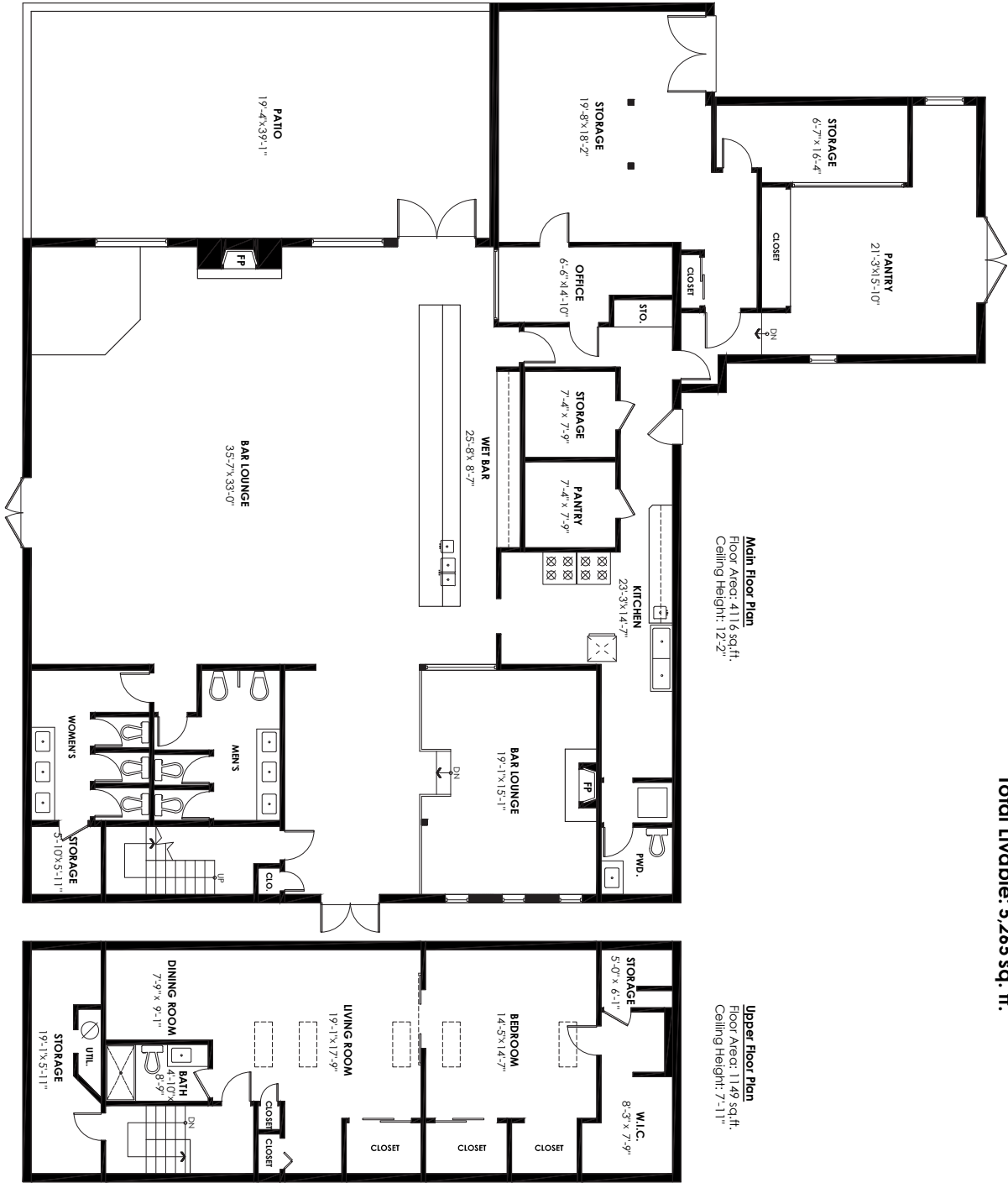


Rob Warwick
Personal Real Estate Corporation
604-720-2256
rob@sellingwithrob.com
RE/MAX Colonial Pacific Realty Ltd.

19974 Silverview Road, Hope

Main Floor: 4,116 sq. ft.
Upper Floor: 1,149 sq. ft.
Total Livable: 5,265 sq. ft.

Patio: 797 sq. ft.
Total Extras: 797 sq. ft.



©2024 cotdai Inc. E&O Insured. For advertising purposes only. Not intended for architectural or construction use. Floorplan and measurements are approximate within +/- 2% tolerance.

The enclosed information while deemed to be correct, is not guaranteed. This communication is not intended to solicit properties already listed for sale.

19974 SILVERVIEW ROAD, HOPE

EXCLUSIVE LISTING \$2,800,000

Presenting the iconic Silver Chalice Pub, an esteemed establishment nestled in the heart of Hope, BC. This historic property boasts a rich heritage and offers a unique opportunity to own a piece of local culture. Featuring a spacious interior with rustic charm, a welcoming ambiance, a well-equipped kitchen, and recently renovated bathrooms, this property is primed for continued success. Situated moments from the well traveled Trans Canada Highway, the Silver Chalice Pub is a cornerstone of the community, ready for new owners to continue its legacy or reimagine its future. Don't miss this chance to own a piece of Hope's vibrant history.

PUB 4,116 SF | LIVING SPACE 1,149 SF | 2 BED | 1 BATH | TOTAL 5,265 SF



TAKE THE TOUR
cotala.com/73897